

# Centre for Contemporary Art and the Natural World

Launch of **Fashion Footprints:** Sustainable Approaches

**PROGRAMME**  
**AUGUST 2010-FEBRUARY 2011**  
HALDON FOREST PARK  
EXETER

[www.ccanw.co.uk](http://www.ccanw.co.uk)



# CCANW

## Haldon Forest Park

The Forestry Commission's pioneering activity trails at Haldon provide 20 miles of safe, off-road access for walkers, cyclists and horse riders, including play and sensory trails. The Forest lies on a ridge south of Exeter and dominates the skyline for miles around. It covers an area of 3500 acres (1400 hectares) mostly planted with coniferous woodland, but encompassing areas of broadleaved trees, streams and dramatic views to Dartmoor, Exeter and the Exe estuary.

## Travel

From the A38 Devon Expressway (Exeter to Plymouth road) take the turning to Haldon Forest Park and follow the signs. From the A380 (Exeter to Torquay road) follow the brown tourist signs for Haldon Belvedere.

The Dartline 360 bus from Exeter Bus Station to Bridford stops at Haldon Belvedere, a 20 minute walk from the Project Space (not on Sundays and Bank Holidays).



## CCANW opening times

10am-5pm, Tuesdays to Sundays and all Bank Holidays, except between 1 November to 28 February when closing at 4pm. Closed for Christmas, 24-31 December (re-open New Year's Day).

## CCANW concessions

Concessions are available to those aged 60+, unemployed, students and under 16.

## Location

The Project Space is adjacent to the new Gateway car park of Haldon Forest Park, between Exeter Racecourse and Haldon Belvedere, 5 miles (8km) south of Exeter.

## Access

CCANW and its approach are entirely level. Programme information in large print is available. Signing is available at all events, given one week's notice. Disabled parking and toilet facilities are provided by the Forestry Commission.

## Parking

The Forestry Commission operates a Pay and Display car park. £2 all day, Bank Holiday weekends £3, yearly car parking Discovery Pass £20, minibuses £7, coaches £12. Concessions available. Rangers office 01392 834251.

[www.forestry.gov.uk/haldonforestpark](http://www.forestry.gov.uk/haldonforestpark).

## Contact

CCANW, Haldon Forest Park  
Exeter EX6 7XR T: 01392 832277  
E: [info@ccanw.co.uk](mailto:info@ccanw.co.uk) [www.ccanw.co.uk](http://www.ccanw.co.uk)

## Funders



## Fashion Footprints sponsors

Albion Canvas (yurt maker)  
Drytac Europe (display banner fabric)  
Earthscan (environmental and sustainable development publisher)  
Greenfibres (pioneers of eco goods and garments)  
Heath Lambert (art insurance)  
MikeWye.co.uk (suppliers of natural building and decorating products)  
MJS Engineering & Land Surveying PC  
N3 Display Graphics (display banner printing)  
Think IT (small business networks)

Thanks also to Boyces at Manstree (vineyard) and Burwood Lighting

## Front cover:

Cape by Michelle Lowe Holder, dress by Minna Hepburn from *Eco-fashion Show*. PHOTO: J.P. CARVALHO

Programme designed by Northbank, Bath.  
Printed using vegetable based inks on 100% recycled paper from post consumer waste.



## Curators

Felicia Felton, Tara Baoth Mooney,  
Emma Rigby, Sharn Sandor

## Garments

Alabama Chanin, USA  
Ardalanish, UK  
Ciel, UK  
Fashion House, c. 1910, Japan  
Finisterre, UK  
Issey Miyake, Japan  
Izzy Lane, UK  
Merel Karhof, NL  
ReMade in Leeds, UK

## Video book

Nicole Mackinlay Hahn, USA

Finisterre, Stormtrack womens  
wear, closely woven ripstop  
windshell made of 100% recycled  
polyester

PHOTO: ADAM BARNES



## Exhibition: Fashion Footprints: Sustainable Approaches

Sunday 1 August-Sunday 21 November

Admission free

### Exhibition Preview

Saturday 31 July, 2-4pm

By invitation only

2.30pm – Introduction by Dr. Kate Fletcher,  
Reader in Sustainable Fashion at London  
College of Fashion

*Ethical fashion represents an approach  
to the design, sourcing and manufacture  
of clothing which maximises benefits to  
people and communities while minimising  
impact on the environment.*

[www.ethicalfashionforum.com](http://www.ethicalfashionforum.com)

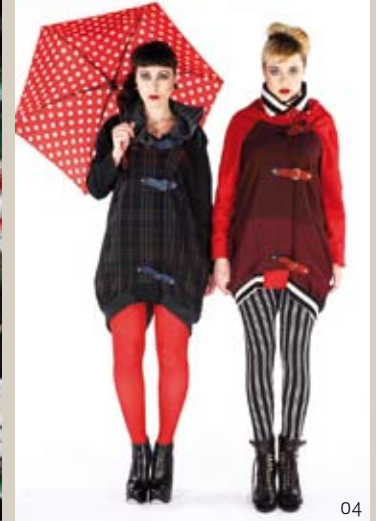
Curated by four graduates from the  
inaugural MA Fashion and the Environment  
at London College of Fashion, the exhibition  
takes a look at the underlying problems  
facing sustainability in the industry through  
eight themes identified in Dr. Kate Fletcher's  
seminal book *Sustainable Fashion and  
Textiles: Design Journeys*.

The exhibition also explores the possible  
solutions enabling us, as consumers, to  
make more informed decisions about  
the clothes we choose to wear.

02



03



# Fashion Footprints

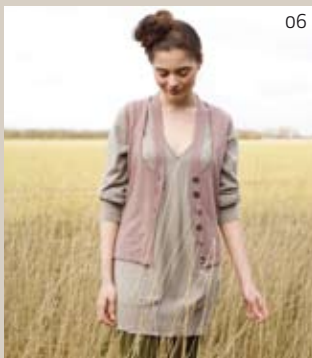
04



05

Each of the themes – materials, production, garment use, end of life, consumption habits, locality, speed and connection to the maker – will also be illustrated with a garment.

The garments exhibited range from pioneering closed loop production pieces, to items that display a zero waste premise to 'hand me down' and cherished garments that identify with quality and the current speed of fashion consumption.



06

05  
Alabama Chanin, Maggie's All-Over Dress, Spring 2010, hand stitched in 100% organic cotton.

IMAGE COURTESY OF ALABAMA CHANIN

06  
Izzy Lane, Cashmere cut out waistcoat

PHOTO: IZZY LANE

07  
Ciel, Asymmetric draped silver lyocell up-cycled eco-jersey dress

PHOTO: CIEL

02  
Child labour is used for picking cotton in Uzbekistan

IMAGE COURTESY OF ETHICAL JUSTICE FOUNDATION, COTTON CAMPAIGN

03  
Hand embroidered kimono c.1910, Japan (detail)

PHOTO: SHARN SANDOR

04  
Collection 10, ReMade in Leeds, community made fashion

PHOTO: SALLY COLE PHOTOGRAPHY

**Fashion Footprints: Sustainable Approaches** is available for touring to universities and colleges with fashion and textile courses. Please contact CCANW for details.

Our **3 Ways Weaving (and unpicking) Station** will give a chance for visitors of all ages to explore the way textiles are woven and the amazing array of fibres which can produce them.



07

**Event: The Big Wash**  
Sunday 1 August, 12.30-4pm

Admission free. No booking required

60% of the environmental impact of textiles happens during the 'use' phase of the lifecycle of a garment. Find out how water and energy usage, soaps and other chemicals impact on the environment and rediscover the fine art of washing wool and other delicates with wool expert Yuli Somme.



ILLUSTRATION: INES VICENTE

**Outdoor Stage: Makers and Musicians**

During summer weekends, we will be featuring music performances and makers/designers whose work links to the themes of our programme. Sunday 8 August, Alison Harper and Sunday 29 August, Yuli Somme, both included in *Material Actions*.

Schedule on [www.ccanw.co.uk](http://www.ccanw.co.uk).

## Fair Fashion Festival Weekend

### Event: Art in the Park goes Slow Fashion Saturday 14 August, 11am-6pm

Admission free. No booking required.

Now in its third year, this event will be fun for all ages and even bigger this year with stalls, workshops, demonstrations and music. Meet local and UK-wide producers and makers working sustainably producing fibres and fashion, and advocacy organisations.

Workshops provided by: Dartington Arts (tbc), Devon Arts Network, Devon Guild of Craftsmen, Embercombe, Exeter Phoenix, Organic Arts, Royal Albert Memorial Museum, Spacex.

Thanks to Albion Canvas for the generous loan of yurts and tepees, and to Yurts for Life for hire support, 14-19 August.

08



09



### Designers in the Eco-fashion Show:

Alabama Chanin, Anna-Maria Hesse, Ardalanish, Bodkin, Ciel, Elena Garcia, Emma Rigby, Finisterre, Henrietta Ludgate, John Patrick, Leila Hafzi, Michelle Lowe-Holder, Minna Hepburn, Noir, Rachael Cassar, Tara Baoth Mooney, Thieves and many more.

08

Art in the Park, August 2009

PHOTO: CHRIS LEWIS

09

*Portable Pelt* 2009 by Tara Baoth Mooney, one of the curators of CCANW's *Fashion Footprints* exhibition

PHOTO: PATRICK HENEGHAN

### Event: Eco-fashion Show in the Forest Sunday 15 August, 3-5pm

Admission £12 (£10 conc.). Booking essential. Incl. complimentary glass of wine and slow goodie bag.

Dartington based choreographer Joni Brown will lead dancer/models from Totnes School of Dance in a show featuring innovative garments from the leaders in sustainable fashion. Special guest, Otto von Busch, Fashion Hacktivist; whose projects mix fashion theory and philosophy with fashion craftsmanship and activism. Live music by Duskk.



**Workshop: Summertime Blues**  
**Wednesday 18 August and Thursday**  
**19 August, 10am-12noon or 1-4pm**

Admission £4 (incl. cloth bag to print on).  
Drop-in, no booking required. Suitable for  
children and adults

Jane Deane will demonstrate indigo and  
woad dyeing and display a selection of  
types of plants used for dyeing. Have a  
go at printing on a cloth bag using natural  
dye pigments.

Jane Deane is the co-author of *Creative  
Spinning*.

**September-December: The Fashion  
Footprints Road Show**

CCANW takes to the road with a hands-on  
workshop aimed for young people in youth  
centres, rural and urban group settings  
and schools exploring themes around  
sustainability in fashion and textiles. For  
more information or to book the Road  
Show, contact Johanna at CCANW.



10

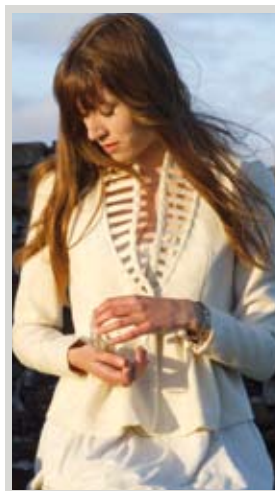
Lengths of indigo-dyed cotton  
hanging in the courtyard Bayt  
Muhammad Ali Abud, Zabid,  
Yemen, 1983

PHOTO: JENNY BALFOUR-PAUL

11

An average White Face Dartmoor  
ewe's wool is worth around £1.50.  
Shearing costs about £1 per ewe

PHOTO: DEER PARK FARM



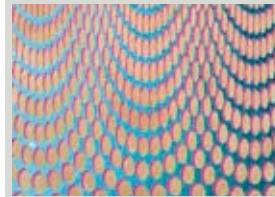
12  
Hedgehog Jacket, Ardalanish/Anja  
Hynynen, made from 100% wool  
and organic hemp silk lining

PHOTO: ALEX CONNELL

13  
Emma Neuberg, founder of the  
Slow Textiles Group, *Cascade*,  
recycled pvc, 2007

PHOTO: © EMMA NEUBERG

[www.slowtextiles.org](http://www.slowtextiles.org)



**Forum: Wool Culture 2**  
**Town Hall, Bovey Tracey**  
**Friday 24 September, 10am-4pm**

Admission £19 (£15 conc.). Booking  
essential, includes refreshments and lunch

In association with the Devon Guild of  
Craftsmen, the forum intends to stimulate  
debate, share information and find new  
directions for this undervalued yet  
sustainable resource; featuring Ardalanish  
Isle of Mull Weavers, whose products  
include organic meat and award-winning  
woollen textiles and fashion, and Val  
Grainger, the Woolly Shepherd, Overall  
Winner of the Devon Environmental  
Business Awards 2009.

[www.ardalanishfarm.co.uk](http://www.ardalanishfarm.co.uk)  
[www.woollyshepherd.co.uk](http://www.woollyshepherd.co.uk)

**Seminar: Material Actions**  
**Studio Theatre, Plymouth College of Art**  
**Saturday 16 October, 10am-3.30pm**

Admission free. Booking essential:  
[exhibitions@plymouthart.ac.uk](mailto:exhibitions@plymouthart.ac.uk)

To coincide with the Plymouth showing of  
*Material Actions* (9 Sept-23 Oct.), the  
College is organising a seminar featuring  
presentations by four artists featured  
in the exhibition – Lucy Brown, Jonnet  
Middleton, Emma Neuberg and Charlotte  
Squire.

**Workshop: Dinner to Dye for**  
**Friday 22 October, 10am-5pm,**  
**dinner at 6pm**

Admission £30 (£25 conc.) including meal.  
Booking essential (numbers limited)

Join Katelyn Toth-Fejel, Co-Director of the Permacouture Institute in San Francisco, for an exploration of natural dyeing with a culinary twist as a range of edible natural dye plants culminate into a mouth watering vegetarian meal. An evening of films on the subject of dyeing follows the meal and is free to workshop participants.



**Film: Documentaries to Dye for**  
**Friday 22 October, 7.30pm**

Admission £5 (£3 conc.). Booking essential

An evening of films, introduced by Jenny Balfour-Paul (tbc), author of *Indigo*, showing how traditional techniques and cultures often use natural dye processes which are environmentally sound and economically beneficial.

**Half-term Workshop: Felting accessories**  
**Tuesday 26 October, 12.30-3pm**

Admission £4. No booking required.

Design and make your own colourful felt accessories using a mix of sustainably farmed merino, local wool and recycled fabrics with feltmaker Tian Kalouli. No experience required.



14  
Tian Kalouli, felt necklace

**EXE-treme Imagination Festival of Literature for Children and Young People**

Artist Kathy Norris will be making textile books with young children based on their exploration of the forest with the books exhibited at Exeter Phoenix during the festival, November 1-7.

**Conference: Ethical Fashion Insights**  
**Thursday 4 November, 10.30am-4pm**  
**Somerset College of Arts and Technology**

Admission £24 (including lunch); £10 conc. (does not include lunch). Numbers limited; book through CCANW – info@ccanw.co.uk

Featuring presentations from Orsola de Castro, winner of *The Observer* Ethical Award for Fashion, Otto von Busch, Fashion Hactivist and William Lana of *Greenfibres*, this event also includes speakers with insights into areas that impact the industry eg water usage and UK fibre production.

With kind promotional support from Earthscan

15  
Orsola de Castro, *From Somewhere*, Autumn/Winter 2010/11

PHOTO: WILL WHIPPLE  
www.fromsomewhere.co.uk

Otto von Busch  
www.selfpassage.org  
www.greenfibres.com

15



## Artists

Barbara Anderson  
Sue Bradley  
Lucy Brown  
Julie Graves  
Alison Harper  
Faith Kane  
Jonnet Middleton  
Eleanor Morgan  
Emma Neuberger  
Mrs Smith  
Yuli Somme  
Charlotte Squire  
Kim Thornton

Note seminar in Plymouth on  
16 October

16



16  
Eleanor Morgan, *Spider's web  
cup and saucer*  
PHOTO: ELEANOR MORGAN

17  
Jonnet Middleton, *Unity Panda*

18  
Barbara Anderson, *Cat and skull  
patches*

19  
Yuli Somme, *Felt Foot*

**Exhibition: Material Actions**  
**Saturday 27 November-Sunday**  
**27 February 2011.** Admission free

**Exhibition launch:**  
**Sunday 28 November, 2-4pm**

All welcome, refreshments provided

Chosen from a UK-wide 'open submission', *Material Actions* shows work by 13 makers which questions how textiles are used to affect and contribute to ethical, social, cultural and environmental change.

Inspired by ideas explored in Textile Forum South West's conference *Textile Footprint* last year, it focuses on the special qualities and active role textiles practice can bring to challenge these debates.



17

# Material Actions

A new publication, *Material Actions*, has been published by Plymouth College of Art to coincide with the exhibition with a specially commissioned essay by Dr. Kate Fletcher. Price £4 from CCANW bookshop.

*Material Actions* has been developed in partnership with Plymouth College of Art and Textile Forum South West.

18



19





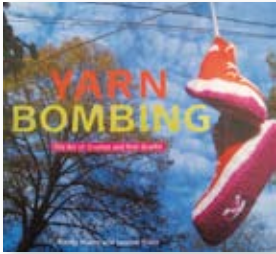
**Workshop: Upcycling for Xmas**  
**Saturday 4 December, 10am-12noon**  
**or 2-4pm**

Admission £8 (£6 conc.). Booking essential  
 Alison Harper will show participants how to make festive decorations from alternative materials eg snack wrappers and other found materials. Produce innovative items suitable for tree, table or even the garden using simple techniques at next to no cost.

**Shop**

CCANW already stocks the widest range of books, exhibition catalogues and artist monographs relating to the arts and ecology. Our stock is now increased significantly to include many new titles, with a particular emphasis on fashion and textiles. Remember, if you are a Friend of CCANW, you are entitled to a 10% discount on purchases.

During *Fashion Footprints*, CCANW will be selling organic cotton towels generously donated by *Greenfibres* of Totnes, as sponsorship in kind. Also, designer t-shirts from the Environmental Justice Foundation, a charity campaigning to stop forced child labour in cotton production.



20



20  
 Oil Spill by Eleanor Partimi.  
 Other EJF designs by Ciel,  
 John Rocha, Zandra Rhodes, etc.  
[www.ejfoundation.org](http://www.ejfoundation.org)

# Auction

**Fundraiser: Online Art Auctions**

During our recent appeal, several artists offered to donate their works to a benefit auction. Rather than hold one auction with many works, CCANW has decided to offer one or more donated works every two months to the highest bidder. Bids for the first two works, kindly donated by Susan Derges and illustrated on our web site, closed at noon 25 July.

Bids for new donated works, including a work by Nicole Mackinlay Hahn, a *Fashion Footprints* exhibitor (see below) are invited from 1 August and at two month intervals with closing bids due at noon, 30 September, 30 November and 31 January. We would welcome donations of work from other artists and collectors to contribute to our evolving online auction.

Nicole Mackinlay Hahn: *Sew Much to Smile About*, archival C-Print, 25,5 x 43cm, from an edition of five

More details on [www.ccanw.co.uk](http://www.ccanw.co.uk)



# Friends

## Friends: Make a difference

We would like to thank everyone who contributed so generously and promptly to our successful appeal in January by becoming a CCANW Friend or making a donation.

If you like what we're doing and would like to help us build on our successes as an innovative educational charity, why not become a CCANW Friend?

You can join for a mere £1 a month and your contribution would directly support our busy year-round programme of exciting events, workshops and activities. Single memberships are £12 per annum, concessions (those aged 60+, unemployed, students and under 16s) £10 and joint memberships £18. If you'd like to join, please send us a cheque (made out to CCANW), together with the completed form.

As a small thank you we are offering Friends 10% off ticketed events, sales of art works and books purchased in the bookshop.

If you would just/also like to make a donation, please Gift Aid it if you pay tax at the basic rate or above each year, as this increases your donation by 28% at no extra cost to you.

**You can also now become a Friend or donor on our website [www.ccanw.co.uk](http://www.ccanw.co.uk)**



## Friends Membership/Donation Form

Name: .....

Home address: .....

Postcode: .....

Telephone: .....

Email: .....

**I would like to become a CCANW Friend** (tick as appropriate):

Single £12       £10 (conc.)

Joint (enter second name below)    £18

**I would just/also like to make a one-off donation, which is eligible for Gift Aid**       Amount .....

*giftaid it*

### Gift Aid declaration

I am a UK tax payer and would like CCANW to claim Gift Aid over my donation

Signed .....

Registered Charity Number: 1092019

## Mailing List Form



Name: .....

Job title and company (if applicable) .....

Mailing address: .....

Postcode: .....

Telephone: .....

Email: .....

I am interested in volunteering for CCANW

Signed .....



# Mailing list

## Mailing List: Do you want to join?

If you would like to join our mailing list and receive our bi-annual programmes by post and/or occasional e-bulletins (which may include additional events), send us your details (name, address, email address) to [info@ccanw.co.uk](mailto:info@ccanw.co.uk), with the words 'I'd like to join your mailing list' in the subject line. Alternatively, send us your details by post to: CCANW, Haldon Forest Park, Exeter EX6 7XR, using the form provided.

## Do you still want to receive information from us?

CCANW is in the middle of updating its mailing list and wants to check if you are still happy to receive information about forthcoming activities, events and exhibitions. It is also an opportunity to check if the contact details we have for you are correct.

Please let us know at [info@ccanw.co.uk](mailto:info@ccanw.co.uk) if you would like to be taken off our postal and e-mailing lists altogether, if you would only like to receive e-bulletins or only brochures or both (if you don't already) or if your details have changed.

## Volunteers

Volunteers are involved in many activities at CCANW and make a vital contribution to the delivery of the programme. For more information please contact Johanna on [j.korndorfer@ccanw.co.uk](mailto:j.korndorfer@ccanw.co.uk)



### **The Ridge Café**

The Ridge Café – next to CCANW – has been designed around sourcing local produce, from fresh farm breakfasts, homemade soups and pies, sandwiches, gourmet burgers and ice creams. Please consult their website for opening times [www.theridgecafe.co.uk](http://www.theridgecafe.co.uk).

t: 01392 833268

### **Forestry Commission events**

The Forestry Commission also runs a wide variety of events at Haldon. Details are listed in their South West events programme available from the Rangers' office. See also: [www.forestry.gov.uk/haldonforestpark](http://www.forestry.gov.uk/haldonforestpark)

t: 01392 834233

### **Forest Cycle Hire**

You can hire bikes and take full advantage of all of Haldon's cycle trails. Booking and information [www.forestcyclehire.co.uk](http://www.forestcyclehire.co.uk).

t: 01392 833768

### **Adventure Course: Go Ape**

Go Ape is an award-winning high wire forest adventure course at Haldon. Details and booking online [www.goape.co.uk](http://www.goape.co.uk)

t: 0845 6439215



21

David Nash at Yorkshire Sculpture Park Underground Gallery

PHOTO: JONTY WILDE

### **Don't Miss**

### **David Nash at Yorkshire Sculpture Park 29 May-27 February 2011**

David Nash is an internationally acclaimed British artist known primarily for his work in wood. This exhibition is his largest ever and presents sculpture, drawings and photographs from across a forty-year career.

There are over 200 works on display in all four indoor galleries and in the open air. There is also a new permanent, outdoor commission – *Black Steps* (2010) – on the walking route to Longside Gallery.

Catalogues available from CCANW

[www.jsp.co.uk](http://www.jsp.co.uk)

21



CCANW hopes to be able to show a selection from this exhibition next year.